

## 兔抗 TMEM121B 多克隆抗体

中文名称：兔抗 TMEM121B 多克隆抗体

英文名称：Anti-TMEM121B rabbit polyclonal antibody

别名：transmembrane protein 121B; CECR6

相关类别：一抗

储存：冷冻（-20℃）

宿主：Rabbit

抗原：TMEM121B

反应种属：Human

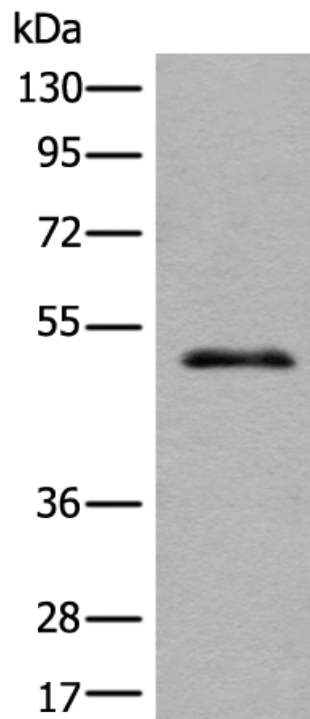
标记物：Unconjugate

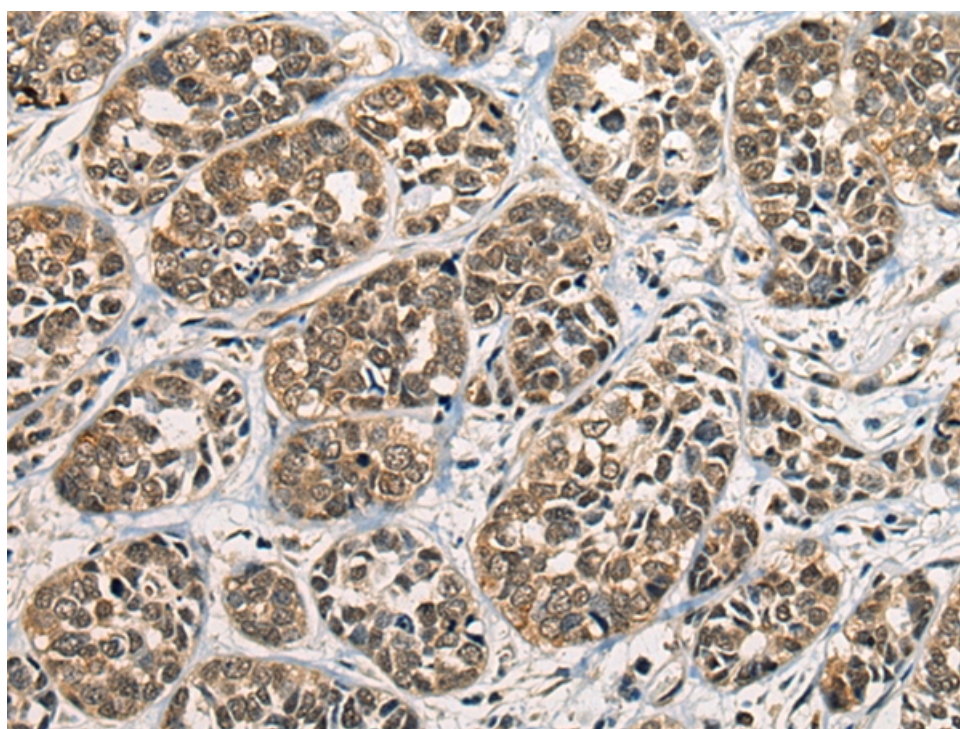
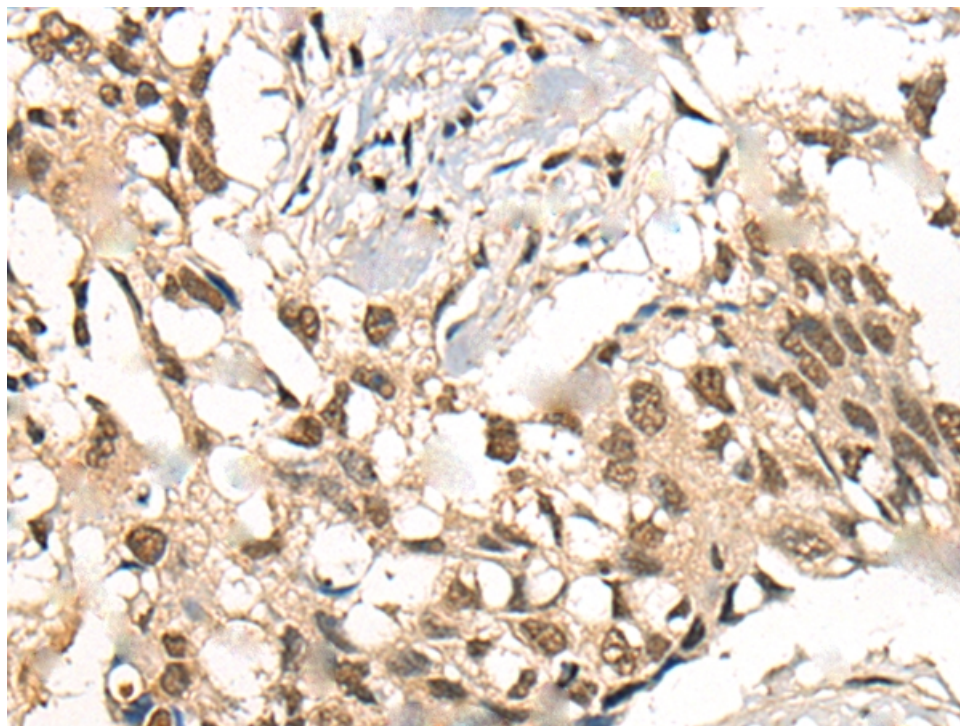
克隆类型：rabbit polyclonal

### 技术规格

<b>Background:</b>	Candidate gene for the Cat Eye Syndrome (CES), a developmental disorder associated with the duplication of a 2 Mb region of 22q11.2. Duplication usually takes in the form of a supernumerary bisatellited isodicentric chromosome, resulting in four copies of the region (represents an inv dup(22)(q11)). CES is characterized clinically by the combination of coloboma of the iris and anal atresia with fistula, downslanting palpebral fissures, preauricular tags and/or pits, frequent occurrence of heart and renal malformations, and normal or near-normal mental development.
<b>Applications:</b>	ELISA, WB, IHC

<b>Name of antibody:</b>	TMEM121B
<b>Immunogen:</b>	Synthetic peptide of human TMEM121B
<b>Full name:</b>	transmembrane protein 121B
<b>Synonyms:</b>	CECR6
<b>SwissProt:</b>	Q9BXQ6
<b>IHC positive control:</b>	Human esophagus cancer and Human lung cancer
<b>IHC Recommend dilution:</b>	20-100
<b>WB Predicted band size:</b>	58 kDa
<b>WB Positive control:</b>	Human heart tissue lysate
<b>WB Recommended dilution:</b>	200-1000





**mlbio** 梅联生物  
Good elisakit producers

